

Concept Plan

Block 154, Lots 10-14
1694 Pennington Road

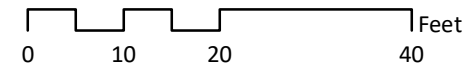
A Portion of Ewing Township
Mercer County, NJ

Ewing Township B-N Bulk Regulations		
	Permitted	Proposed
Minimum Requirements		
Lot Area, interior	5,000 s.f.	23,766 s.f.
Lot Width, interior	50'	121'
Front Yard	25'	25'
Side Yard, each	5'	5'
Rear Yard	5'	36'
Building Height	35'/3 1/2 stories	35'/2 stories
Total Impervious Surface	75%	71%

Legend

-  Property Boundary
-  Building
-  Landscape Bed
-  Lawn
-  Masonry Wall
-  Patio
-  Pavement
-  Sidewalk

Map Scale = 1:240
or 1" = 20'

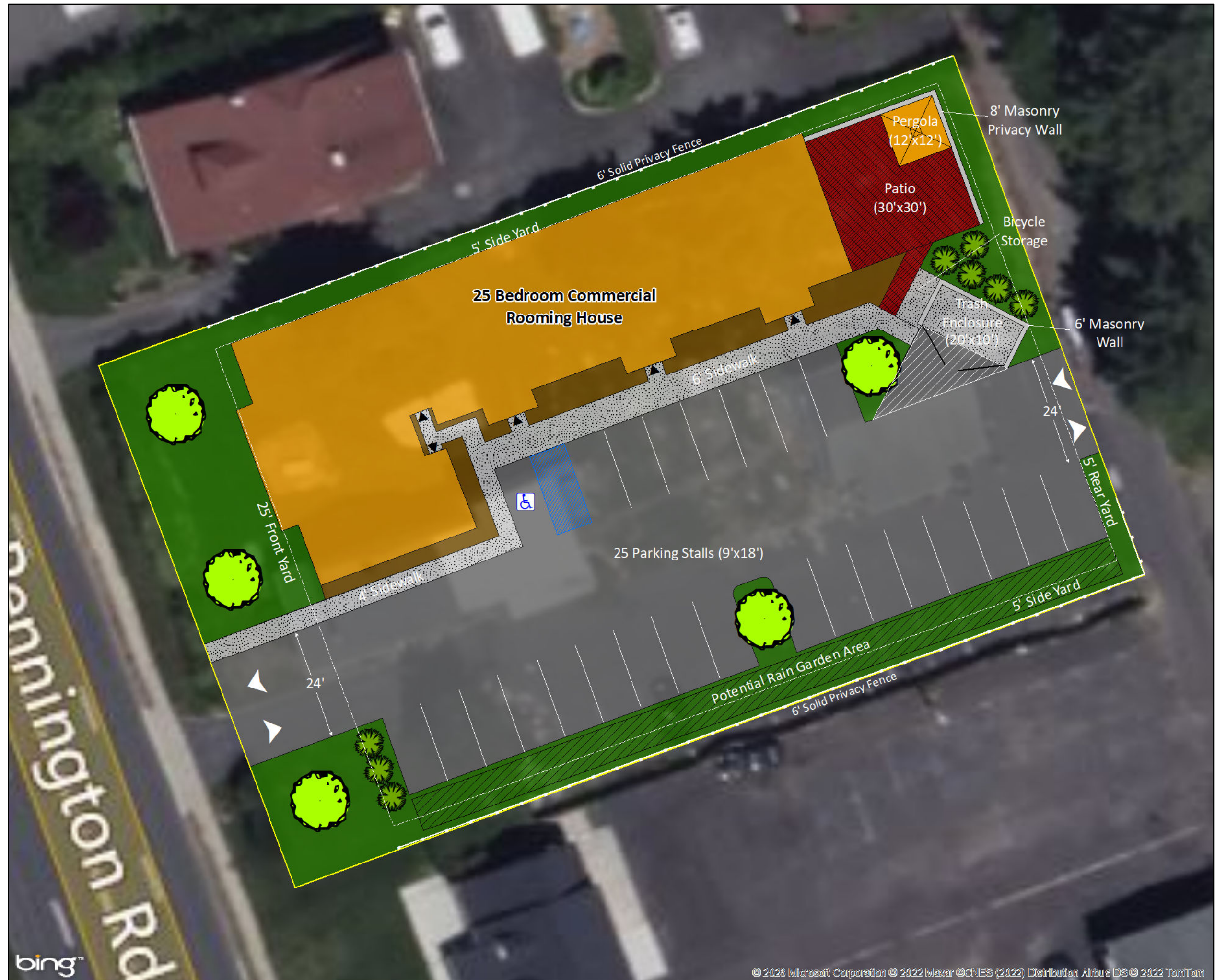


Map Prepared by:
James T. Kyle, PP/AICP
PO Box 236
Hopewell, NJ 08525
(609)529-8692
jkyle@kylemcmanus.com



Data Sources:
NJ Office of Information Technology, Office of Geographic Information Systems, BING Maps

POLICY
PLANNING
DESIGN

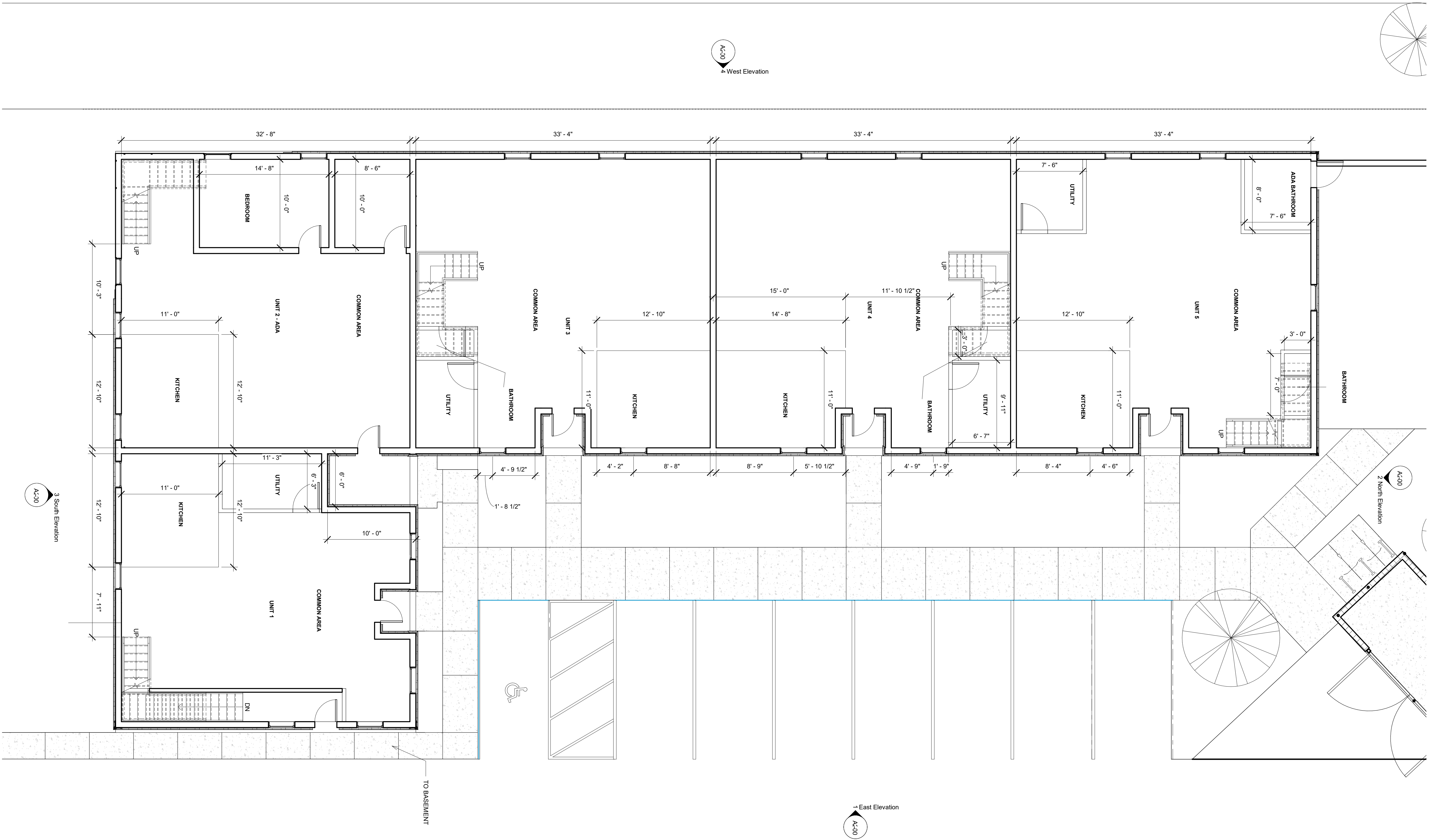
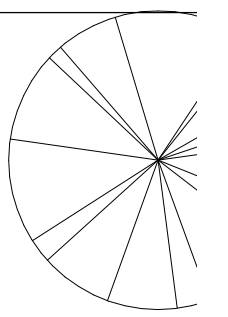


bing™









A-C30
West Elevation

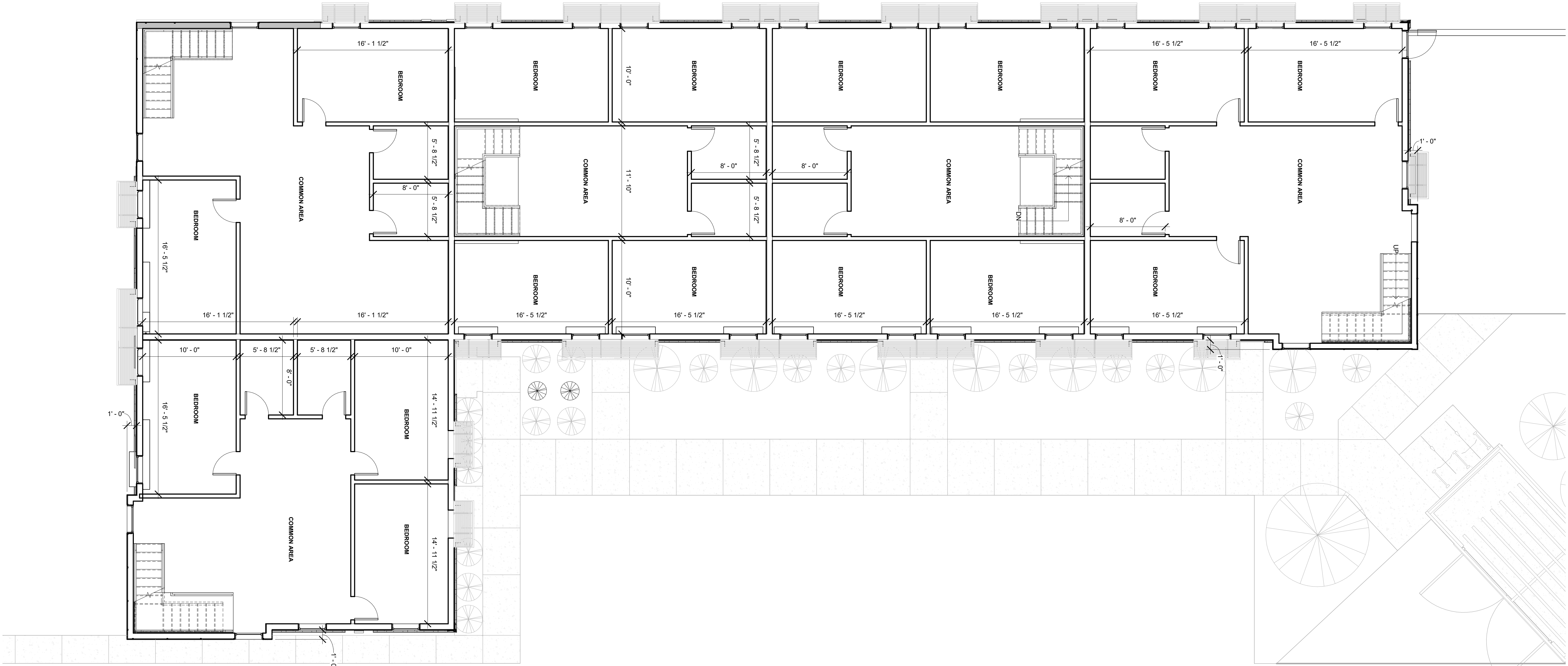
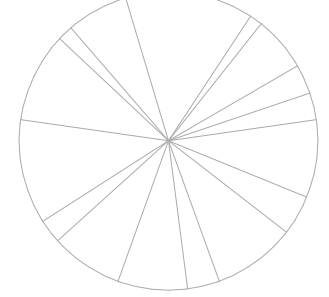
A-C30
3 South Elevation

A-C30
2 North Elevation

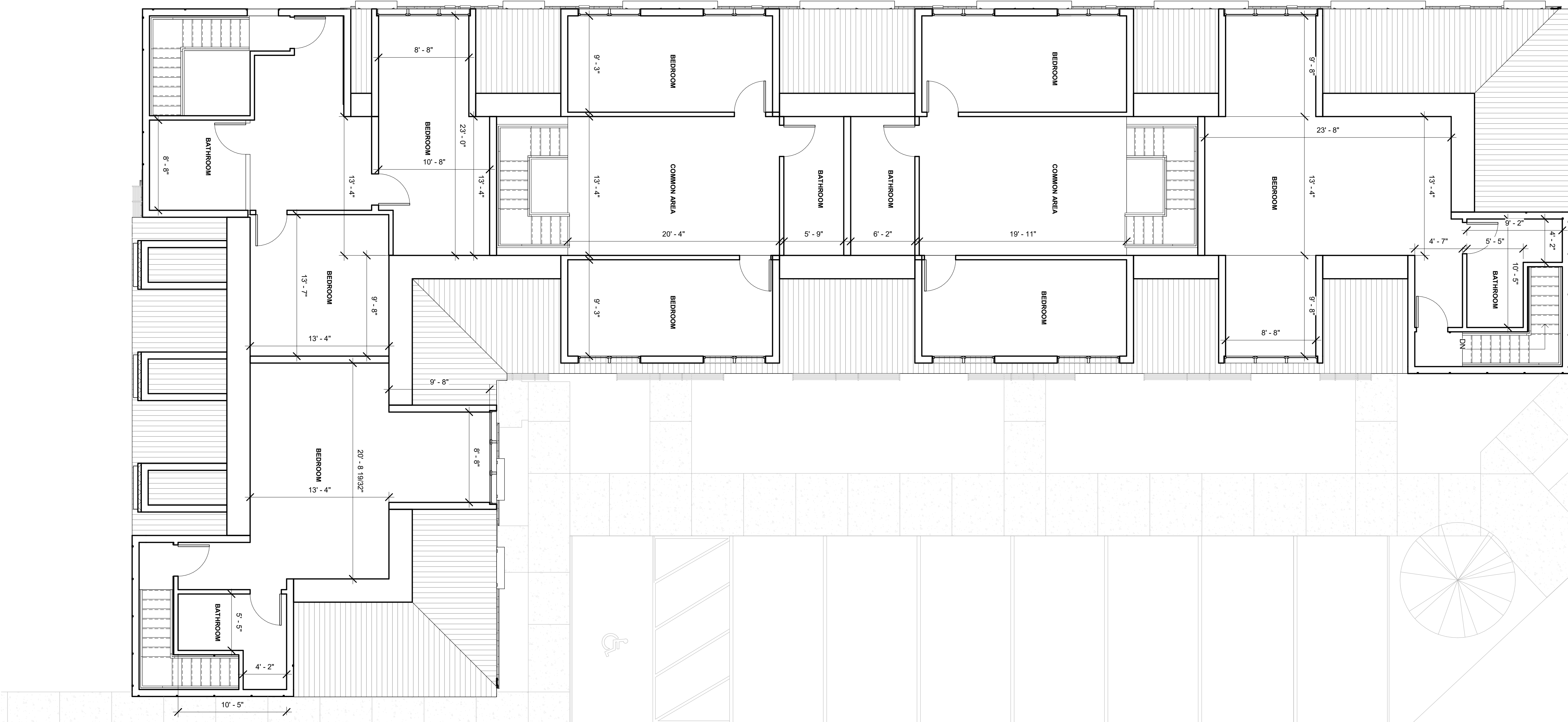
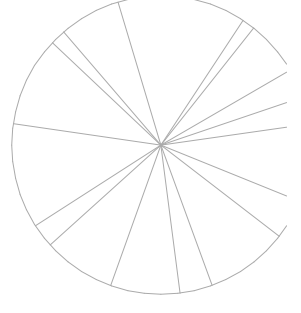
A-C30
1 East Elevation

TO BASEMENT

1 BUILDING PLAN - GROUND LEVEL
3/16" = 1'-0"



1 BUILDING FLOOR PLAN - SECOND LEVEL
3/16" = 1'-0"



1 BUILDING FLOOR PLAN - THIRD LEVEL
3/16" = 1'-0"