

Tasker

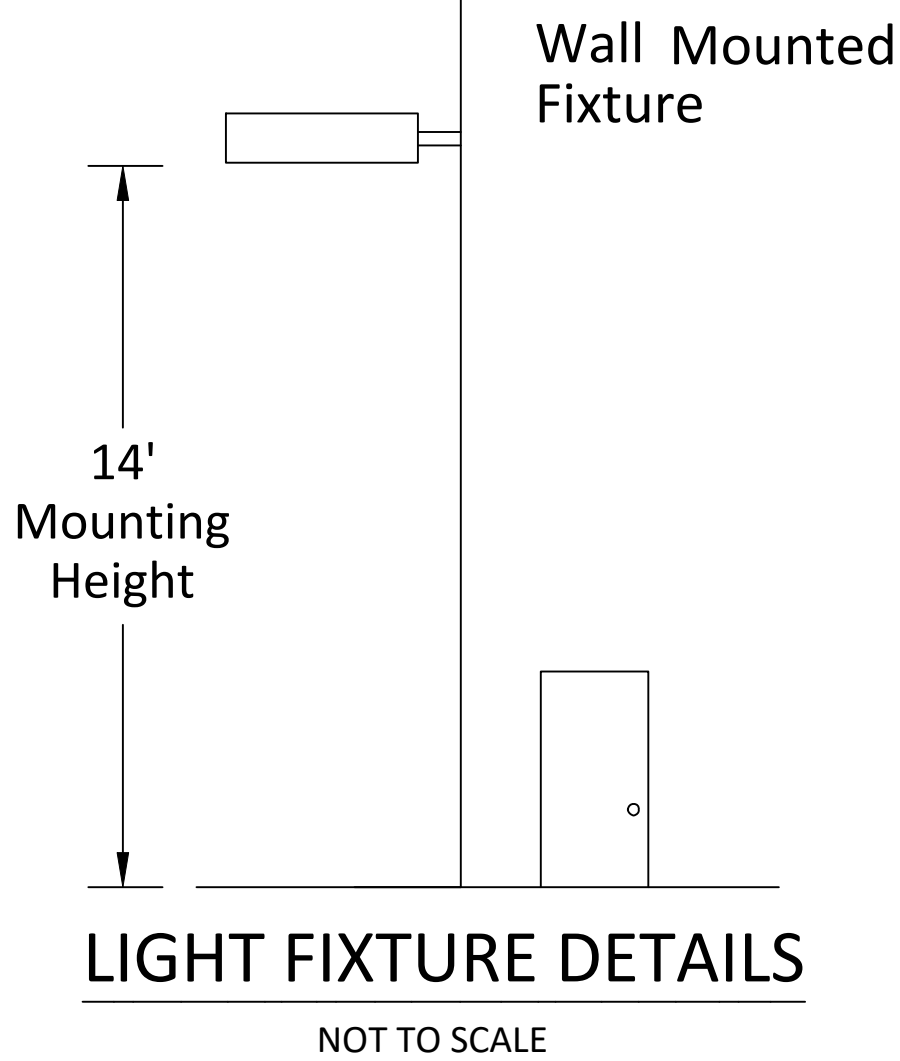
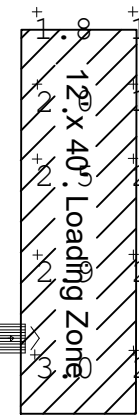
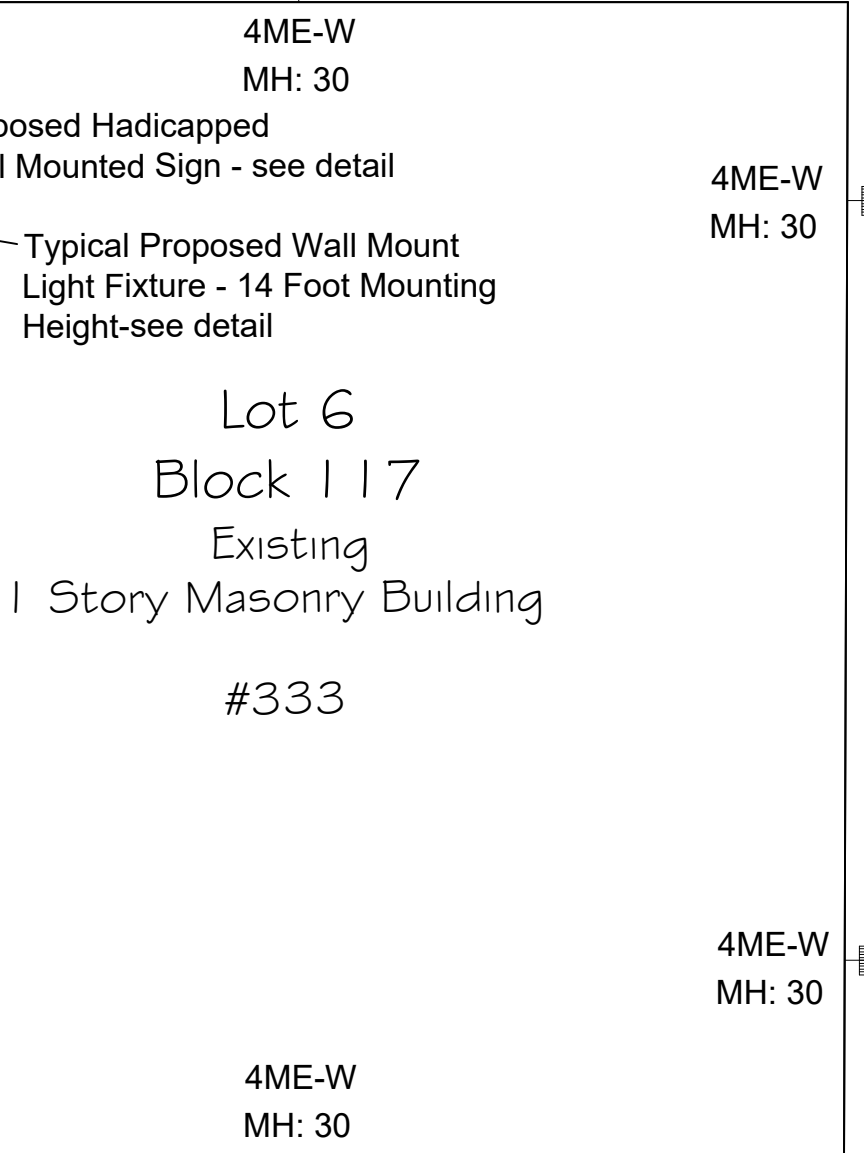
Dickenson

Fourth Street

Lot 6  
Block 117  
Existing  
1 Story Masonry Building  
#333

Existing  
2 Story Masonry Building  
  
Lot 8  
Block 117  
#339

Lot 9  
Block 117



**OSQ Series**  
OSQ™ LED Area/Flood Luminaire - Medium

**Product Description**  
The OSQ™ Area/Flood luminaire stands extreme optical control, advanced thermal management and modern, clean aesthetics. Built to last, the housing is rugged cast aluminum with an integral wide-angle LED driver components, variable mounting configurations offer simple installation to site. Low profile design maximizes wind load requirements and allows installation in high wind areas. Available in 2' and 4' diameters. The "X" input power design is a suitable upgrade for HID applications up to 250 Watt, and the "Y" input power design is a suitable upgrade for HID applications up to 400 Watt.

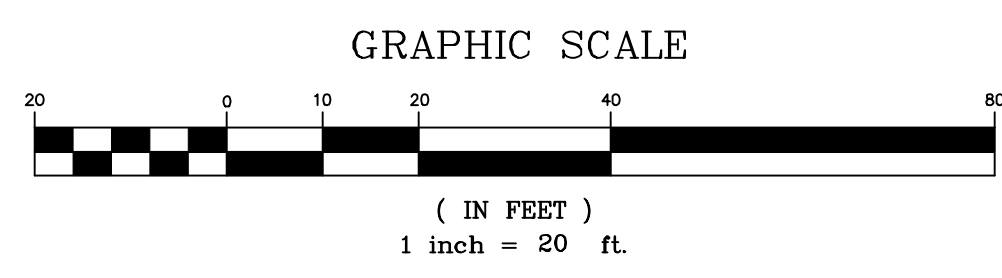
**Performance Summary**  
Non-flicker Precision Delivery 5000K optic  
Made in the U.S.A. of U.S. and imported parts  
Initial Delivered Lumens up to 72,201  
Efficiency up to 150 lm/W  
CRI: Maximum 75 CRI (3000K & 5000K, 3000K asymmetric optic), 80 CRI (3000K symmetric optic)  
CCT: 3000K (L, R), 3500K (L, R), 5000K (L, R), 5700K (L, R)  
Lifetime Warranty: 50,000 hours (minimum 30,000 hours for Certified Disturbance™ brand)

**Accessories**  
Flood bracket  
Adjustable arm  
Cast aluminum  
Cast aluminum  
Mounting arm  
Mounting arm  
Mounting arm

**Ordering Information**  
Part numbers shown in this document are for reference only. Part numbers for specific configurations may vary. Please refer to the OSQ™ product manual for complete ordering information. Part numbers for accessories are listed in the OSQ™ product manual.

Product	Version	Mounting	Optic	Power	Color	Options
OSQ	A	W	AS	300W	5000K	...

US Lighting Inc. 1-800-224-4800 • 1-202-566-5435



**Note:** Location and elevations of underground utilities and features shown hereon, have been collected from various sources and are not guaranteed as to accuracy or completeness. The contractor shall verify all information to his satisfaction prior to excavation or construction. Where existing utilities or features may interfere with proposed construction, test pits shall be dug by the contractor prior to construction to ascertain existing locations and elevations. Any conflicts shall be brought to the attention of the engineer prior to construction to permit adjustments as required to resolve conflicts.



**Princeton Junction Engineering, P.C.**  
Professional Engineers, Land Surveyors and Planners  
P.O. Box 610 - 53 North Post Road  
Princeton Junction, New Jersey 08550  
Telephone: 609.799.1906 Facsimile: 609.799.1524 Email: pje@pjcpc.com

D. Geoffrey Brown, PE, CME, PP & PLS  
Frank J. Falcone, PLS  
Martin D. Katz, PP  
Kevin M. Brakel, PE, CME

**Frank J. Falcone**  
N.J. Professional Land Surveyor & Professional Planner  
Date: 4/23/2021

**Kevin M. Brakel**  
N.J. Professional Engineer  
Date: 4/23/2021

**Lighting & Signage Plan**  
#333 & #339 Fourth Street  
Blackstone Poultry & Livestock, LLC  
Located in  
Ewing Township \* Mercer County \* New Jersey

Date: 3/19/2021  
Scale: 1"=20'  
Drawn: FJF  
Check: FJF/KMB

Job#: F210218  
Dwg: OG-LIGHT-SIGN-DETAIL  
View: Window

File # F210218

Sheet 6 of 6

NO.	DATE	DESCRIPTION	BY
1	4/23/2021	As per SRC Review	FJF

**LIGHT FIXTURE DATA**