



**Princeton Junction Engineering, P.C.**  
 Professional Engineers, Land Surveyors and Planners  
 P.O. Box 610 - 53 North Post Road  
 Princeton Junction, New Jersey 08550  
 Telephone: 609.799.1906 Facsimile: 609.799.1524 Email: pje@pjec.com

No. 24327  
 No. 32112  
 No. 3760  
 No. 36249  
 No. 44194

PE, CME, PP # PLS  
 PE, CME, PP # PLS  
 PE, CME, PP # PLS  
 PE, CME, PP # PLS

D. Geoffrey Brown  
 Frank J. Falcone  
 Martin D. Katz  
 Kevin M. Brakel

Professional Planner  
 Date: 4/23/2021

**Frank J. Falcone**  
 N.J. Professional Land Surveyor & Professional Planner

**Kevin M. Brakel**  
 N.J. Professional Engineer

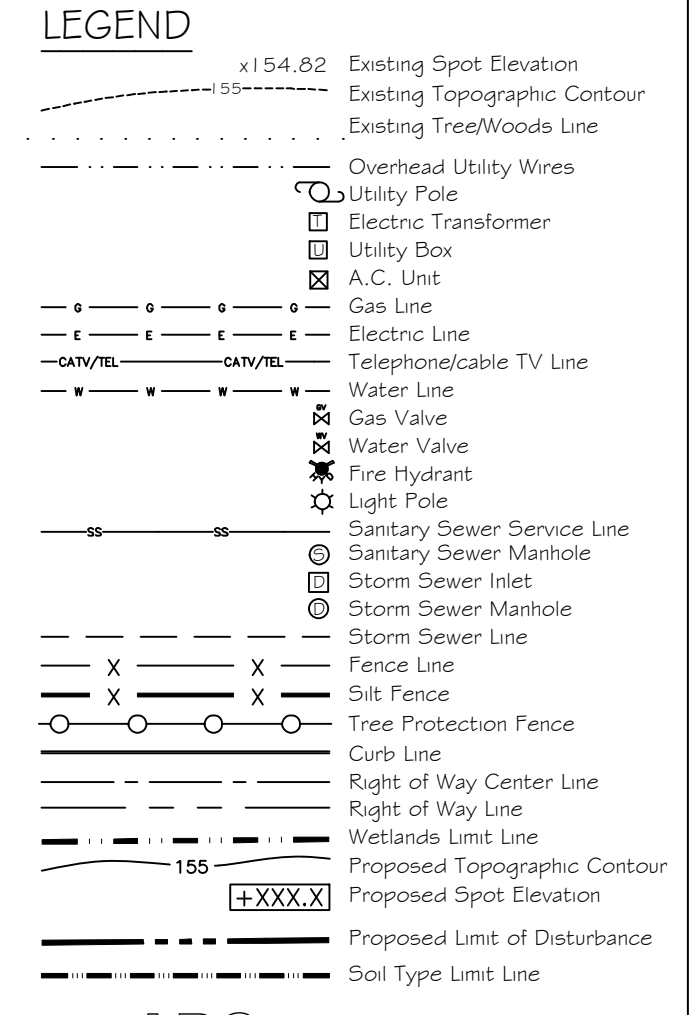
**Landscapes Plan**  
 #333 & #339 Fourth Street  
 of Tax Map Lots 6 & 8, Block 117, Sheet 5 for  
**Blackstone Poultry & Livestock, LLC**  
 Located in  
 Ewing Township \* Mercer County \* New Jersey

Date: 3/19/2021  
 Scale: 1"=20'  
 Drawn: FJF  
 Check: FJF/KMB

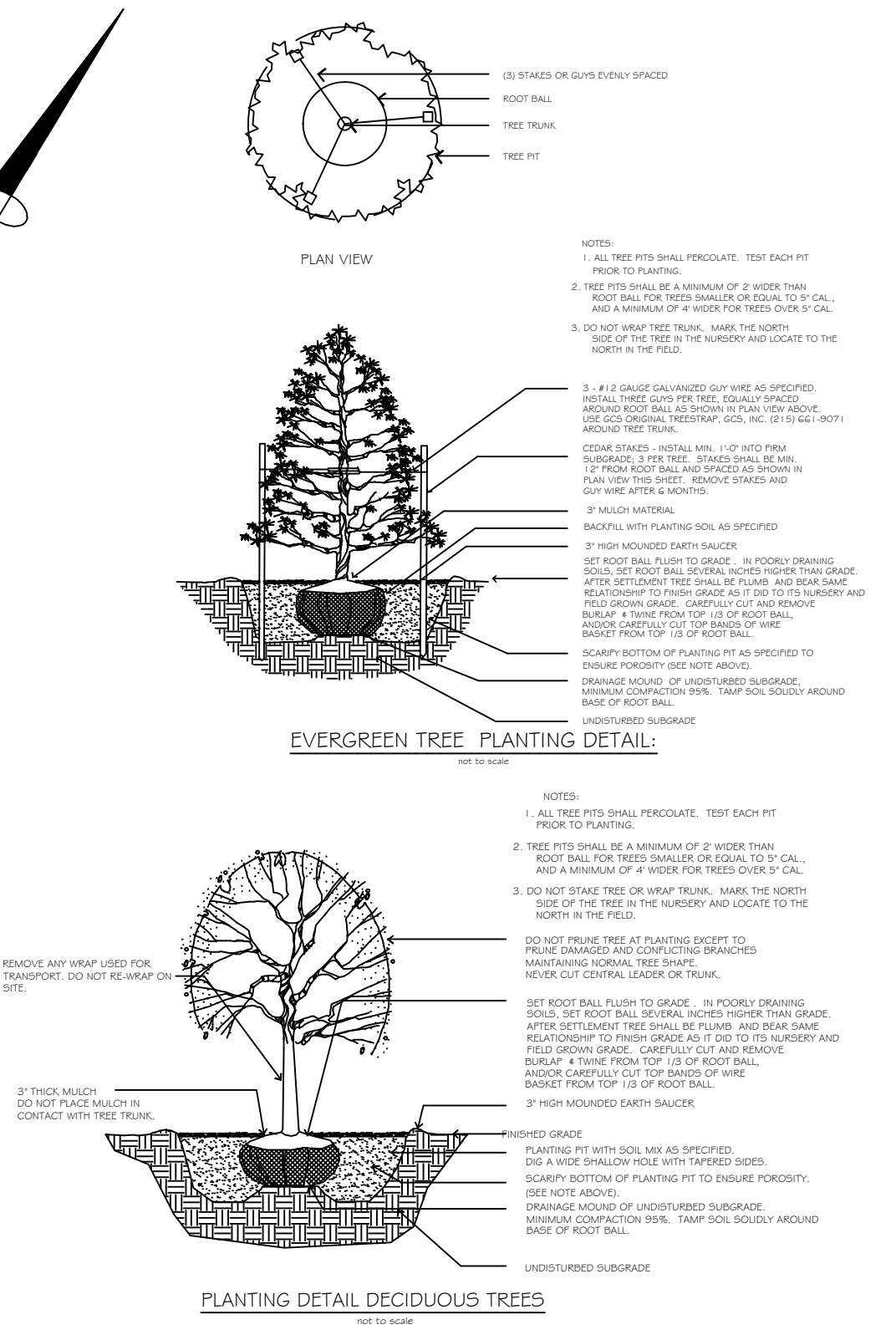
Job#: F210218  
 Dwg#: 05-LANDSCAPE PLAN  
 View: Window

File # F210218

Sheet 5 of 6



- Planting Notes Required by Ewing Township**
- Ewing Township shall be notified of the planting schedule at least 30 days in advance of planting dates.
  - All plants must be typical of their species and variety, have normal growth habits, well developed branches, be densely foliated, and be free of pests and diseases. All plants must conform to the American Standard for Nursery Stock, latest edition.
  - All plants delivered to the site must contain a label indicating plant genus, species and, if appropriate, cultivar.
  - Substitutions will not be permitted unless written proof is supplied that a specific plant is not obtainable. In this situation, a proposal to use the nearest equivalent size or variety will be subject to approval by the Municipal Landscape Architect.
  - Plant only within the following dates, weather permitting. Do not plant when ground is frozen or the soil is otherwise in an unsatisfactory condition for planting.
    - \* Plant balled and burlapped evergreen only in spring, between March 1 and June 15.
    - \* Plant balled and burlapped deciduous trees and rescaled evergreen trees and shrubs and container grown trees and shrubs and groundcovers between September 15 and November 15.
    - \* Install plants known to be fall planting hazards in spring only. Planting at times other than spring for fall planting hazards plants shall be done at the contractor's risk and shall not relieve the obligation of guarantee.
    - \* Plant bare root whips and shrubs only in the spring, when dormant, and as close to April 1 as possible.
    - \* Plant perennials as soon as the ground is workable in spring until June 15 and between September 1 and November 15.
    - \* Plant bulbs between September 1 and November 15, as soon as they become available from suppliers.
  - The Township reserves the right to make a final inspection before the release of the performance bond. Any deficiencies in the planting installation will be noted on a punch list. All punch list items must be addressed prior to the release of the performance guarantee.
  - The Township reserves the right to make final inspection before the release of the maintenance bond. Any deficiencies in the planting installation will be noted on a punch list. All punch list items must be addressed prior to release of the maintenance bond.
  - All landscape improvements must be properly maintained and all dead plant material must be replaced immediately.

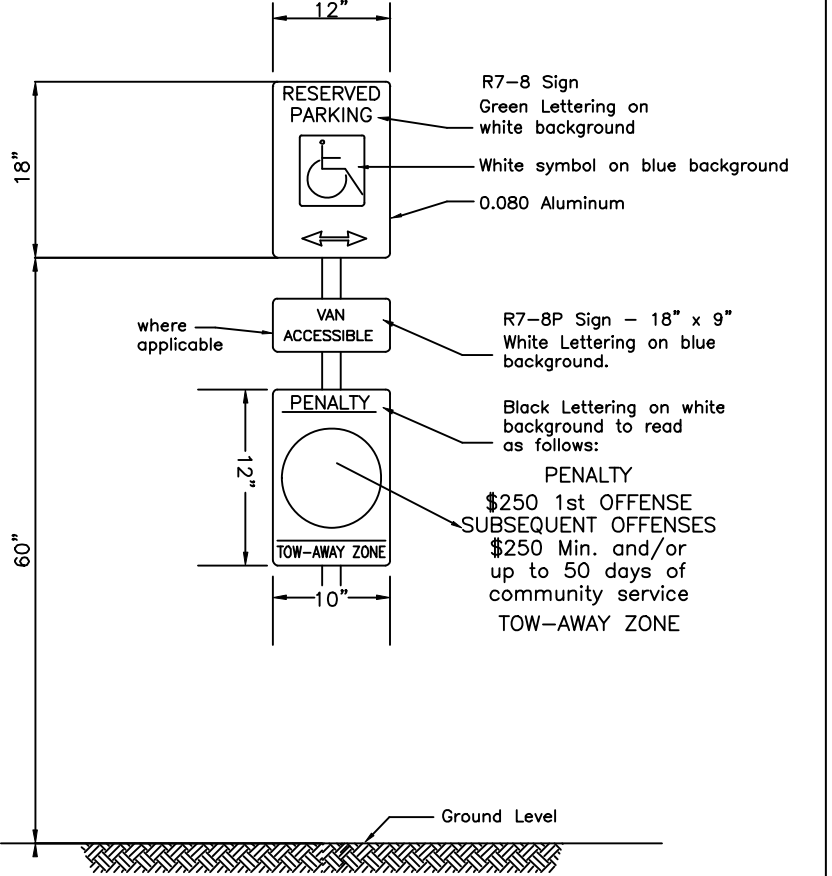


**PROPOSED PLANTING SCHEDULE**

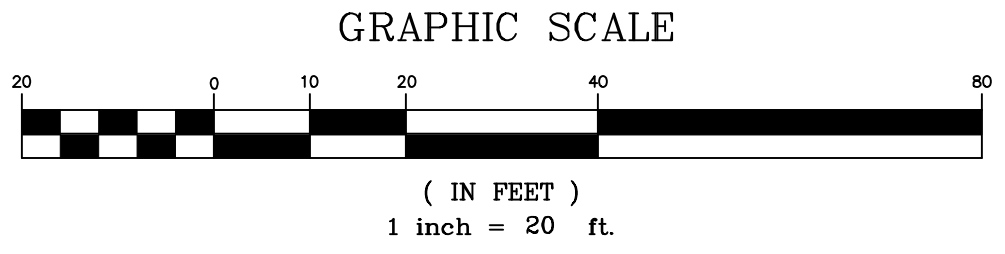
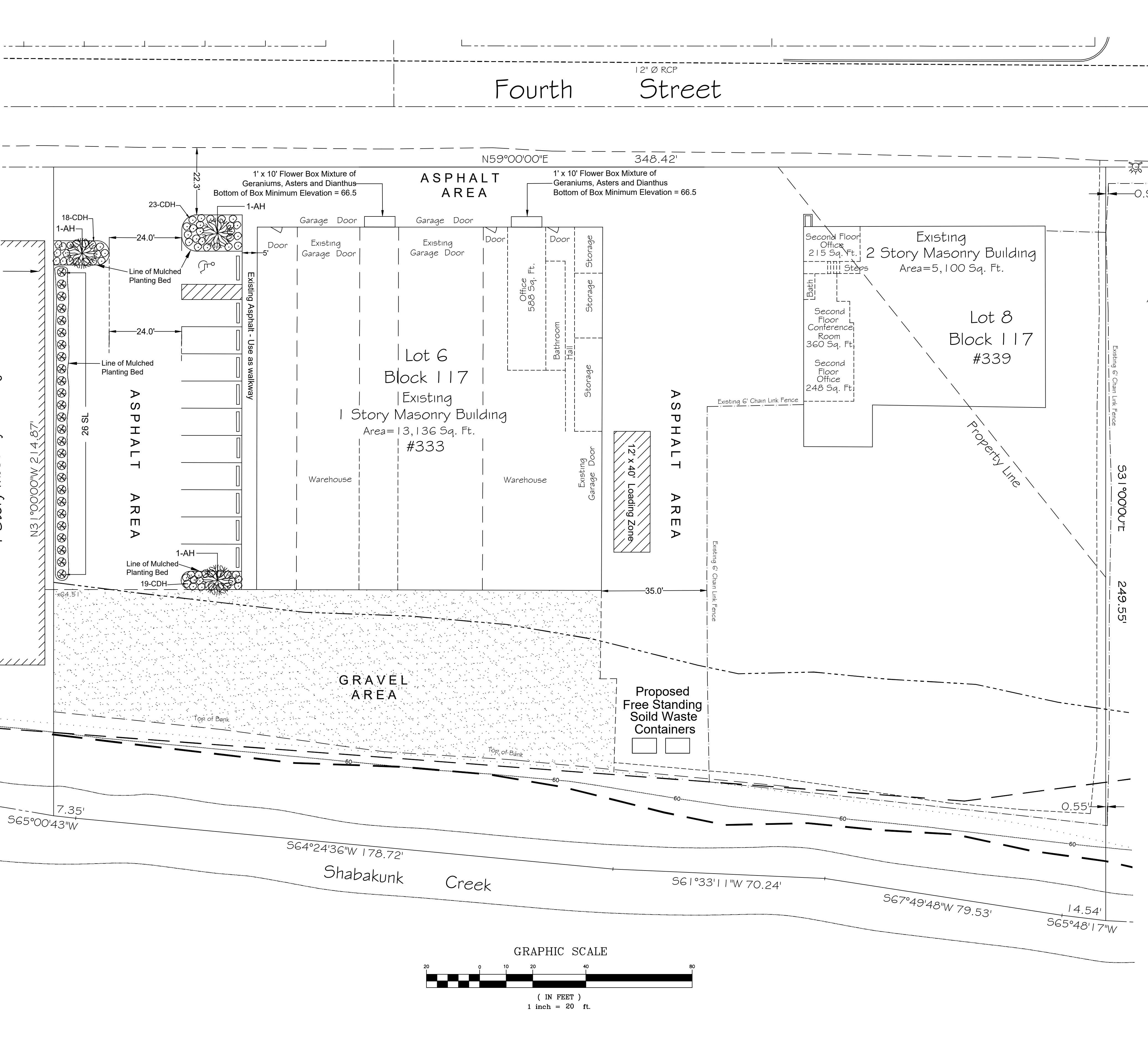
Symbol	Botanical Name	Common Name	Quantity	Caliper/Notes
<b>TREES</b>				
AH	Carpinus caroliniana	American Hornbeam	3	2-1/2"-3" Cal. / B & B
SL	Prunus Laurocerasus "Schipkaensis"	Skip Laurel	45	30"/36" #7 Can
CDHO	Cotoneaster dammeri "Herbstfeuer"	Fallfire Cononeaster	41	18"/24" #2 Can



Wheel Stop Detail  
 Not to Scale



Wall Mounted Handicapped Sign Detail  
 Not to Scale



**Note:** Location and elevations of underground utilities and features shown hereon, have been collected from various sources and are not guaranteed as to accuracy or completeness. The contractor shall verify all information to his satisfaction prior to excavation or construction. Where existing utilities or features may interfere with proposed construction, test pits shall be dug by the contractor prior to construction to ascertain existing locations and elevations. Any conflicts shall be brought to the attention of the engineer prior to construction to permit adjustments as required to resolve conflicts.



NO.	DATE	DESCRIPTION	BY
1	4/23/2021	As per SRC Review	FJF