

Planting Notes Required by Ewing Township

1. Ewing Township shall be notified of the planting schedule at least 30 days in advance of planting dates.
2. All plants must be typical of their species and variety, have normal growth habits, well developed branches, be densely foliated, and be free of pests and diseases. All plants must conform to the American Standard for Nursery Stock, latest edition.
3. All plants delivered to the site must contain a label indicating plant genus, species and, if appropriate, cultivar.
4. Substitutions will not be permitted unless written proof is supplied that a specific plant is not obtainable. In this situation, a proposal to use the nearest equivalent size or variety will be subject to approval by the Municipal Landscape Architect.

5. Plant only within the following dates, weather permitting. Do not plant when ground is frozen or the soil is otherwise in an unsatisfactory condition for planting.
 - * Plant balled and burlapped evergreen only in spring, between March 1 and June 15.
 - * Plant balled and burlapped deciduous trees and needed evergreen trees and shrubs and container grown trees and shrubs and groundcovers between September 15 and November 15.
 - * Install plants known to be fall planting hazards in spring only. Planting at times other than spring for fall planting hazard plants shall be done at the contractor's risk and shall not relieve the obligation of guarantee.
 - * Plant bare root whips and shrubs only in the spring, when dormant, and as close to April 1 as possible.
 - * Plant perennials as soon as the ground is workable in spring until June 15 and between September 1 and November 15.
 - * Plant bulbs between September 1 and November 15, as soon as they become available from suppliers.

6. The Township reserves the right to make a final inspection before release of the performance bond. Any deficiencies in the planting installation will be noted on a punch list. All punch list items must be addressed prior to the release of the performance guaranty.
7. The Township reserves the right to make final inspection before the release of the maintenance bond. Any deficiencies in the planting installation will be noted on a punch list. All punch list items must be addressed prior to release of the maintenance bond.
8. All landscape improvements must be properly maintained and all dead plant material must be replaced immediately.

REMOVE ANY WRAP USED FOR TRANSPORT. DO NOT RE-WRAP ON SITE.

3" THICK MULCH DO NOT PLACE MULCH IN CONTACT WITH TREE TRUNK.

NOTES:

1. ALL TREE PITS SHALL PERCOLATE. TEST EACH PIT PRIOR TO PLANTING.
2. TREE PITS SHALL BE A MINIMUM OF 2" WIDER THAN ROOT BALL FOR TREES SMALLER OR EQUAL TO 5" CAL. AND A MINIMUM OF 4" WIDER FOR TREES OVER 5" CAL.
3. DO NOT STAKE TREE OR WRAP TRUNK. MARK THE NORTH SIDE OF THE TREE IN THE NURSERY AND LOCATE TO THE NORTH IN THE FIELD.
- DO NOT PRUNE TREE AT PLANTING EXCEPT TO PRUNE DAMAGED AND CONFLICTING BRANCHES MAINTAINING NORMAL TREE SHAPE. NEVER CUT CENTRAL LEADER OR TRUNK.
- SET ROOT BALL FLUSH TO GRADE. IN POORLY DRAINING SOILS, SET ROOT BALL SEVERAL INCHES HIGHER THAN GRADE. AFTER SETTLEMENT TREE SHALL BE PLUMB AND BEAR SAME RELATIONSHIP TO FINISH GRADE AS IT DID TO ITS NURSERY AND FIELD GROWN GRADE. CAREFULLY CUT AND REMOVE BURLAP 4 TWINE FROM TOP 1/3 OF ROOT BALL, AND/OR CAREFULLY CUT TOP BANDS OF WIRE BASKET FROM TOP 1/3 OF ROOT BALL.
- 3" HIGH MOUNDED EARTH SAUCER.

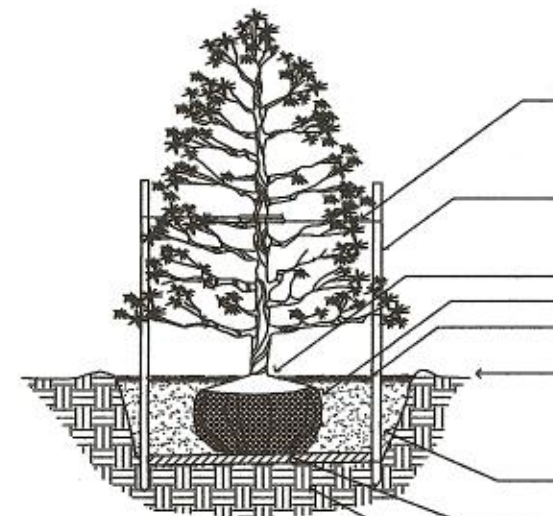
FINISHED GRADE PLANTING PIT WITH SOIL MIX AS SPECIFIED. DIG A WIDE SHALLOW HOLE WITH TAPERED SIDES. SCARIFY BOTTOM OF PLANTING PIT TO ENSURE POROSITY. (SEE NOTE ABOVE). DRAINAGE MOUND OF COARSE YELLOW CONCRETE SAND MINIMUM COMPACTION 95%. TAMP SOIL SOLIDLY AROUND BASE OF ROOT BALL.

UNDISTURBED SUBGRADE

PLANTING DETAIL DECIDUOUS TREES

not to scale

PLAN VIEW

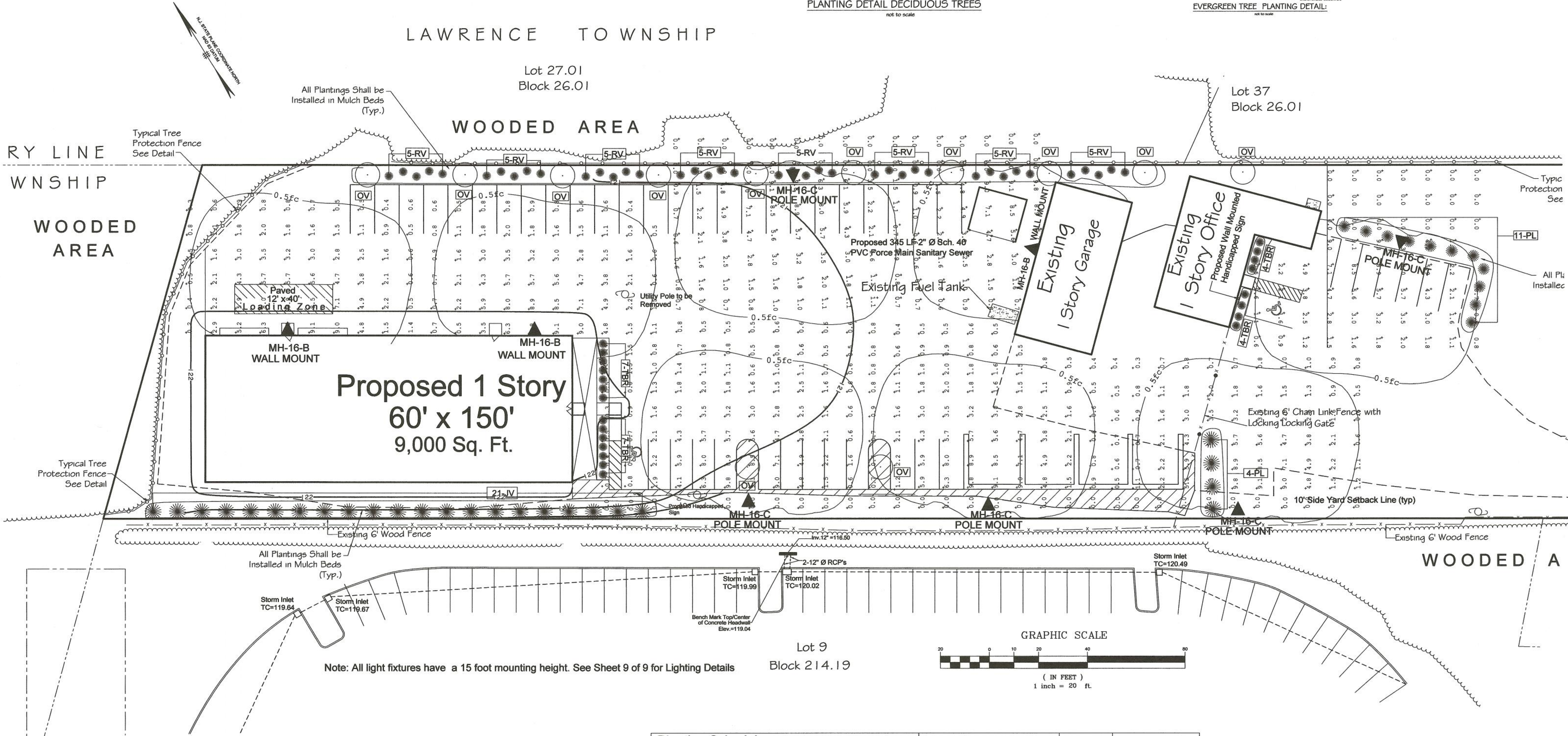


EVERGREEN TREE PLANTING DETAIL:

not to scale

LEGEND

- Existing Spot Elevation
- Existing Topographic Contour
- Existing Tree/Woods Line
- Overhead Utility Wires
- Utility Pole
- Electric Transformer
- Utility Box
- A.C. Unit
- Gas Line
- Electric Line
- Telephone/Cable TV Line
- Water Line
- Gas Valve
- Water Valve
- Fire Hydrant
- Light Pole
- Sanitary Sewer Service Line
- Sanitary Sewer Man
- Sanitary Sewer Manhole
- Storm Sewer Inlet
- Storm Sewer Manhole
- Storm Sewer Line
- Fence Line
- Curbs Line
- Right of Way Center Line
- Right of Way Line
- Wetlands Limit Line
- Proposed Topographic Contour
- Proposed Spot Elevation



Planting Schedule					
Symbol	Quantity	Botanical Name	Common Name	Cal./ Size	Comments
PL	15	Prunus laurocerasus 'Otto Luykens'	Otto Luykens Cherry Laurel	24"-30"	#3 Can
RV	40	Rhododendron viscosum	Swamp Azalea	24"-30"	#3 Can
OV	12	Ostrya virginiana	American Hophornbeam	2-1/2-3"	B & B
TBR	22	Taxus baccata "Repandens"	Spreading English Yew	2-2-1/2"	B & B
JV	21	Juniperus virginiana	Eastern Redcedar	12-18"	#2 Can

Note: Location and elevations of underground utilities and features shown hereon, have been collected from various sources and are not guaranteed as to accuracy or completeness. The contractor shall verify all information to his satisfaction prior to excavation or construction. Where existing utilities or features may interfere with proposed construction, test pits shall be dug by the contractor prior to construction to ascertain existing locations and elevations. Any conflicts shall be brought to the attention of the engineer prior to construction to permit adjustments as required to resolve conflicts.



Princeton Junction Engineering, P.C.
Professional Engineers, Land Surveyors and Planners
P.O. Box 610 - 53 North Post Road
Princeton Junction, New Jersey 08550
Telephone: 609.799.1906 Facsimile: 609.799.1924 Email: pje@pjec.com

No. 24372
P.E. No. 3760
P.S. No. 38249
P.L.S. No. 44194

PE, CME, PP & PLS
Frank J. Falcone
PE, CME, PP & PLS
Kevin M. Brakel

Frank J. Falcone
N.J. Professional Engineer & Professional Planner
Date: 7/6/2022

Kevin M. Brakel
N.J. Professional Engineer
Date: 7/6/2022

Preliminary & Final Site Plan Application
Landscape, Lighting & Signage Plan
Tax Map of Lot 4, Block 214.19, Sheet 21 for
Full Tilt Labs LLC
Located in
Ewing Township * Mercer County * New Jersey

Date: 5/6/2022
Scale: 1"=20'
Drawn: FJF
Check: FJF/KMB

Job#: F220401
Dwg: 06 Land/Light/Sign
View: Window

File # F220401

Sheet 6 of 10