



INSTR # 2020017115
 D BK 6402 PG 300 Pgs 300 - 314; (15 pgs)
 RECORDED 04/21/2020 09:44:44 AM
 PAULA SOLLAMI COVELLO, COUNTY CLERK
 MERCER COUNTY, NEW JERSEY



**Mercer County
 Document Summary Sheet**

Mercer County Clerk PO Box 8068 240 West State Street 6th Floor Trenton NJ 08650	Return Name and Address Eckert Seamans Cherin & Mellott, LLC P.O. Box 5404 Princeton, NJ 08543
--	--

Official Use Only

Submitting Company		Eckert Seamans Cherin & Mellott, LLC			
Document Date (mm/dd/yyyy)					
Document Type		Freshwater Wetlands Letter of Interpretation			
No. of Pages of the Original Signed Document (Including the cover sheet)		15 14			
Consideration Amount (If applicable)		\$0.00			
First Party (Grantor or Mortgagor or Assignor) (Enter up to five names)	Name(s) <small>(Last Name First Name Middle Initial Suffix) (or Company Name as written)</small>	Address (Optional)			
	Herring Land Group	281 Witherspoon Street, Suite 105, Princeton, NJ 08540			
Second Party (Grantee or Mortgagee or Assignee) (Enter up to five names)	Name(s) <small>(Last Name First Name Middle Initial Suffix) (or Company Name as written)</small>	Address (Optional)			
	New Jersey Department of Environmental Protection	Division of Land Use Regulation, Mail Code 501-02A, P.O. Box 420, Trenton, NJ 08625-0420			
Parcel Information (Enter up to three entries)	Municipality	Block	Lot	Qualifier	Property Address
	Ewing Township	371	3.05		Scotch Road
Reference Information (Enter up to three entries)	Book Type	Book	Beginning Page	Instrument No.	Recorded/File Date

*DO NOT REMOVE THIS PAGE.

DOCUMENT SUMMARY SHEET (COVER SHEET) IS PART OF MERCER COUNTY FILING RECORD. RETAIN THIS PAGE FOR FUTURE REFERENCE.

#571279

Prepared: Frank J. Petrino, Esq.

HERRING LAND GROUP
Block 371, Lot 3.05

N.J. Dept. of Environmental Protection
Freshwater Wetlands Letter of Interpretation: Line Verification
File and Activity Number: 1113-05-0002.2 FWW 190001

- * FRESHWATER WETLANDS LETTER OF INTERPRETATION: LINE VERIFICATION is attached hereto as **Exhibit A**.
- * Approval Expires December 22, 2024.
- * Metes and Bounds description of any wetlands area limit approved by the Letter of Interpretation are set forth on **Exhibit B** (Wetlands Area-1, 2 sheets and Wetlands Area-2, 2 sheets) attached hereto.
- * Wetlands Delineation Plan, prepared by Menlo Engineering Associates, Inc., dated November 13, 2018, last revised August 29, 2019 attached as **Exhibit C** (1 sheet).
- * The State of New Jersey has determined that all or a portion of this lot lies in a freshwater wetland and/or transition area. Certain activities in wetlands and transition areas are regulated by the New Jersey Department of Environmental Protection and some activities may be prohibited on this site or may first require a freshwater wetland permit. Contact the Division of Land Use Regulation at (609) 292-0060 or <http://www.nj.gov/landuse> for more information prior to any construction onsite.

RECORD AND RETURN TO:

Frank J. Petrino, Esq.
Eckert Seamans Cherin & Mellott, LLC
P.O. Box 5404
Princeton, NJ 08543



State of New Jersey

PHILIP D. MURPHY
Governor

DEPARTMENT OF ENVIRONMENTAL PROTECTION

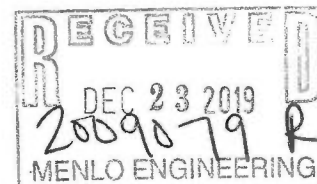
CATHERINE R. McCABE
Commissioner

SHEILA Y. OLIVER
Lt. Governor

Division of Land Use Regulation
Mail Code 501-02A
P.O. Box 420
Trenton, New Jersey 08625-0420
www.nj.gov/dep/landuse

DEC 17 2019

Jamie Herring
Herring Land Group
281 Witherspoon Street
Suite 105
Princeton, NJ 08540



RE: Freshwater Wetlands Letter of Interpretation: **Line Verification**
File and Activity No.: 1100-07-0003.3 FWW180001
Applicant: Herring Land Group
Block and Lot: [371; 3.05]
Ewing Township, Mercer County

Dear Mr. Herring:

This letter is in response to your request for a Letter of Interpretation to have Division of Land Use Regulation (Division) staff verify the boundary of the freshwater wetlands and/or State open waters on the referenced property.

In accordance with agreements between the State of New Jersey Department of Environmental Protection (NJDEP), the U.S. Army Corps of Engineers (USACOE) Philadelphia and New York Districts, and the U.S. Environmental Protection Agency (USEPA), the NJDEP is the lead agency for establishing the extent of State and Federally regulated wetlands and waters. The USEPA and/or USACOE retain the right to reevaluate and modify the jurisdictional determination at any time should the information prove to be incomplete or inaccurate

Based upon the information submitted, and upon site inspections conducted by Division staff on January 30 and October 24, 2019, the Division has determined that the wetlands and waters boundary lines as shown on the plan map entitled: "AIRPORT CORPORATE PARK TOWNSHIP OF EWING, MERCER COUNTY, NEW JERSEY WETLANDS DELINEATION PLAN BLOCK 371 LOTS 3.05 TAX MAP SHEET: 65 22.610 ACRES+/-", Sheet No. 1 of 1, dated November 13, 2018, last revised August 29, 2019, and prepared by Greg A. Gaffney, N.J.P.L.S. of Menlo Engineering Associates, Inc., is accurate as shown.

The freshwater wetlands and waters boundary line(s), as determined in this letter, must be shown on any future site development plans. The line(s) should be labeled with the above-referenced file and activity number and the following note:

"Freshwater Wetlands/Waters Boundary Line as verified by NJDEP."

Wetlands Resource Value Classification ("RVC")

In addition, the Division has determined that the resource value and standard transition area or buffer required adjacent to the delineated wetlands are as follows:

Intermediate: All freshwater wetlands shown on the approved plan [50-foot wetland buffer]

State open water: Within the wetland boundaries [No wetland buffer]

RVC may affect requirements for wetland and/or transition area permitting. This classification may affect the requirements for an Individual Wetlands Permit (see N.J.A.C. 7:7A-9 and 10), the types of Statewide General Permits by Certification or Statewide General Permits available for the property (see N.J.A.C. 7:7A-5, 6 and 7) and any modification available through a transition area waiver (see N.J.A.C. 7:7A-8). Please refer to the Freshwater Wetlands Protection Act (N.J.S.A. 13:9B-1 et seq.) and implementing rules for additional information.

Wetlands resource value classification is based on the best information available to the Department. The classification is subject to reevaluation at any time if additional or updated information is made available, including, but not limited to, information supplied by the applicant.

General Information

Pursuant to the Freshwater Wetlands Protection Act Rules, you are entitled to rely upon this jurisdictional determination for a period of five years from the date of this letter unless it is determined that the letter is based on inaccurate or incomplete information. Should additional information be disclosed or discovered, the Division reserves the right to void the original letter of interpretation and issue a revised letter of interpretation.

Regulated activities proposed within a wetland, wetland transition area or water area, as defined by N.J.A.C. 7:7A-2.2 and 2.3 of the Freshwater Wetlands Protection Act rules, require a permit from this office unless specifically exempted at N.J.A.C. 7:7A-2.4 and 2.5. The approved plan and supporting jurisdictional limit information are now part of the Division's public records.

Please be advised that any surface water features on the site or adjacent to the site may possess flood hazard areas and/or riparian zones and development within these areas may be subject to the Flood Hazard Area Control Act rules at N.J.A.C. 7:13. The Department can verify the extent of flood hazard areas and/or riparian zones through a flood hazard area verification under the application procedures set forth at N.J.A.C. 7:13-5.1.

This letter in no way legalizes any fill which may have been placed, or other regulated activities which may have occurred on-site. This determination of jurisdiction extent or presence does not make a finding that wetlands or water areas are "isolated" or part of a surface water tributary system unless specifically called out in this letter as such. Furthermore, obtaining this determination does not affect your responsibility to obtain any local, State, or Federal permits which may be required.

Recording

Within 90 calendar days of the date of this letter, the applicant shall submit the following information to the clerk of each county in which the site is located, and shall send proof to the Division that this information is recorded on the deed of each lot referenced in the letter of interpretation:

1. The Department file number for the letter of interpretation;

2. The approval and expiration date of the letter of interpretation;
3. A metes and bounds description of the wetland boundary approved under the letter of interpretation;
4. The width and location of any transition area approved under the letter of interpretation; and
5. The following statement: "The State of New Jersey has determined that all or a portion of this lot lies in a freshwater wetland and/or transition area. Certain activities in wetlands and transition areas are regulated by the New Jersey Department of Environmental Protection and some activities may be prohibited on this site or may first require a freshwater wetland permit. Contact the Division of Land Use Regulation at (609) 292-0060 or <http://www.nj.gov/landuse> for more information prior to any construction onsite."

Failure to have this information recorded in the deed of each lot and/or to submit proof of recording to the Division constitutes a violation of the Freshwater Wetlands Protection Act rules and may result in suspension or termination of the letter of interpretation and/or subject the applicant to enforcement action pursuant to N.J.A.C. 7:7A-22.

Appeal Process

In accordance with N.J.A.C. 7:7A-21, any person who is aggrieved by this decision may request a hearing within 30 days of the date the decision is published in the DEP Bulletin by writing to: New Jersey Department of Environmental Protection, Office of Legal Affairs, Attention: Adjudicatory Hearing Requests, P.O. Box 402, Trenton, NJ 08625-0402. This request must include a completed copy of the Administrative Hearing Request Checklist found at www.state.nj.us/dep/landuse/forms. Hearing requests received after 30 days of publication notice may be denied. The DEP Bulletin is available on the Department's website at www.state.nj.us/dep/bulletin. In addition to your hearing request, you may file a request with the Office of Dispute Resolution to engage in alternative dispute resolution. Please see the website www.nj.gov/dep/odr for more information on this process.

Please contact Ariana Tsiattalos of our staff by e-mail at Ariana.Tsiattalos@dep.nj.gov or by phone at (609) 777-0454 should you have any questions regarding this letter. Be sure to indicate the Department's file number in all communication.

Sincerely,



Mark C. Davis, Environmental Specialist 4
Division of Land Use Regulation

c: Ewing Township Municipal Clerk
Ewing Township Municipal Construction Official
Agent (original) – William A. Lane

Legal Description
Airport Corporate Park
Wetlands Area-1
Block 371, Lot 3.05
Township of Ewing
Mercer County, New Jersey

BEGINNING at a point, said point lying North 86 degrees 33 minutes 53 seconds West, a distance of 147.92 from a rebar marking the intersection of the common lot line between Lot 3.05 in Block 371 and Lot 1 in Block 369 with the southerly right-of-way line of New Jersey State Highway Route I-95; thence

Along a wetland line for courses 1 through 40:

1. South 35 degrees 53 minutes 05 seconds West, a distance of 5.54 feet to a point; thence
2. South 76 degrees 07 minutes 23 seconds West, a distance of 41.13 feet to a point; thence
3. South 85 degrees 27 minutes 20 seconds West, a distance of 52.62 feet to a point; thence
4. South 33 degrees 09 minutes 22 seconds West, a distance of 30.70 feet to a point; thence
5. South 39 degrees 08 minutes 10 seconds West, a distance of 54.20 feet to a point; thence
6. South 49 degrees 28 minutes 33 seconds West, a distance of 55.42 feet to a point; thence
7. South 52 degrees 31 minutes 16 seconds West, a distance of 51.26 feet to a point; thence
8. South 60 degrees 39 minutes 25 seconds West, a distance of 74.39 feet to a point; thence
9. South 84 degrees 15 minutes 33 seconds West, a distance of 62.31 feet to a point; thence
10. South 73 degrees 56 minutes 34 seconds West, a distance of 64.71 feet to a point; thence
11. South 74 degrees 50 minutes 22 seconds West, a distance of 66.63 feet to a point; thence
12. South 77 degrees 24 minutes 45 seconds West, a distance of 66.56 feet to a point; thence
13. South 83 degrees 07 minutes 57 seconds West, a distance of 66.89 feet to a point; thence
14. South 81 degrees 29 minutes 45 seconds West, a distance of 78.41 feet to a point; thence
15. South 41 degrees 36 minutes 33 seconds West, a distance of 32.77 feet to a point; thence
16. South 35 degrees 54 minutes 11 seconds West, a distance of 73.82 feet to a point; thence

17. South 06 degrees 30 minutes 57 seconds East, a distance of 46.68 feet to a point; thence
18. South 20 degrees 20 minutes 38 seconds East, a distance of 58.14 feet to a point; thence
19. South 66 degrees 41 minutes 38 seconds West, a distance of 18.06 feet to a point; thence
20. North 57 degrees 19 minutes 43 seconds West, a distance of 33.89 feet to a point; thence
21. North 80 degrees 52 minutes 58 seconds West, a distance of 39.14 feet to a point; thence
22. North 89 degrees 08 minutes 42 seconds West, a distance of 66.53 feet to a point; thence
23. North 61 degrees 25 minutes 35 seconds West, a distance of 74.35 feet to a point; thence
24. North 80 degrees 23 minutes 38 seconds West, a distance of 64.77 feet to a point; thence
25. North 68 degrees 19 minutes 50 seconds West, a distance of 53.04 feet to a point; thence
26. North 48 degrees 00 minutes 34 seconds West, a distance of 43.11 feet to a point; thence
27. North 82 degrees 33 minutes 16 seconds West, a distance of 46.23 feet to a point; thence
28. North 08 degrees 10 minutes 04 seconds West, a distance of 83.77 feet to a point; thence
29. North 83 degrees 01 minute 00 seconds West, a distance of 62.62 feet to a point; thence
30. North 80 degrees 24 minutes 58 seconds West, a distance of 54.04 feet to a point; thence
31. South 85 degrees 23 minutes 47 seconds West, a distance of 13.75 feet to a point; thence
32. South 19 degrees 57 minutes 32 seconds West, a distance of 30.71 feet to a point; thence
33. South 06 degrees 31 minutes 43 seconds East, a distance of 40.11 feet to a point; thence
34. South 76 degrees 53 minutes 03 seconds West, a distance of 10.64 feet to a point; thence
35. North 02 degrees 22 minutes 49 seconds West, a distance of 41.77 feet to a point; thence
36. North 36 degrees 37 minutes 21 seconds West, a distance of 61.12 feet to a point; thence
37. North 28 degrees 46 minutes 40 seconds West, a distance of 24.10 feet to a point; thence
38. South 61 degrees 44 minutes 15 seconds West, a distance of 29.53 feet to a point; thence
39. South 84 degrees 03 minutes 42 seconds West, a distance of 52.54 feet to a point; thence

40. North 68 degrees 02 minutes 29 seconds West, a distance of 32.94 feet to a point lying in the common lot line between Lot 36 in Block 91.01 and Lot 3.05 in Block 371; thence
41. North 80 degrees 34 minutes 16 seconds East, along said common lot line, a distance of 117.16 feet to a point lying in the approximate centerline of the Ewing Creek; thence
42. Along the approximate centerline of Ewing Creek in an easterly direction for a distance of 1,331.79 feet ± to a point lying in the southerly right-of-way line of New Jersey State Highway Route I-95; thence
43. South 86 degrees 33 minutes 53 seconds East, along said southerly right-of-way line, a distance of 101.08 feet to the point or place of BEGINNING.

The above-described wetlands area contains 90,828 square feet (2.085 acres), more or less, as shown on a map entitled "Airport Corporate Park – Wetlands Exhibit" prepared by Menlo Engineering Associates, Inc.; job. no. 2009.079; drawing no. WEX-1; dated January 6, 2020.

The above-described wetland line is a portion of the wetland line delineated from flags WA-4 through WA-42 and is classified as intermediate and is subject to a 50-foot wide wetlands buffer. This determination is based on the Freshwater Wetlands Letter of Interpretation: Line Verification DLUR FILE # 1100-07-0003.3, Activity Number FWW180001, Date of Issue: December 17, 2019; Date of Expiration: December 16, 2024.

The State of New Jersey has determined that all or a portion of this lot lies in a freshwater wetland and/or transition area. Certain activities in wetlands and transition areas are regulated by the New Jersey Department of Environmental Protection and some activities may be prohibited on this site or may first require a Freshwater Wetland Permit. Contact the Division of Land Use Regulation at (609) 292-0060 or <http://www.nj.gov/dep/landuse> for more information prior to any construction on site.

DP/kmr
MEA #2009.079
January 6, 2020



Gregg A. Gaffney
Professional Land Surveyor
NJPLS #GS43304

Legal Description
Airport Corporate Park
Wetlands Area-2
Block 371, Lot 3.05
Township of Ewing
Mercer County, New Jersey

COMMENCING from a rebar, said rebar marking the intersection of the common lot line between Lot 3.05 in Block 371 and Lot 1 in Block 369 with the southerly right-of-way line of New Jersey State Highway Route I-95 and from said point running the following two (2) courses:

- A) South 04 degrees 45 minutes 36 seconds West, along said common lot line, a distance of 595.83 feet to a point; thence
- B) North 85 degrees 14 minutes 24 seconds West, along a line, a distance of 504.81 feet to the true point or place of BEGINNING.

Along a wetland line for courses 1 through 54:

1. South 06 degrees 37 minutes 02 seconds West, a distance of 29.31 feet to a point; thence
2. South 43 degrees 42 minutes 52 seconds West, a distance of 45.25 feet to a point; thence
3. South 23 degrees 53 minutes 45 seconds West, a distance of 46.58 feet to a point; thence
4. South 05 degrees 45 minutes 11 seconds East, a distance of 32.66 feet to a point; thence
5. South 48 degrees 49 minutes 15 seconds East, a distance of 33.69 feet to a point; thence
6. North 87 degrees 35 minutes 36 seconds East, a distance of 52.86 feet to a point; thence
7. South 48 degrees 43 minutes 50 seconds East, a distance of 37.31 feet to a point; thence
8. South 11 degrees 25 minutes 59 seconds East, a distance of 22.37 feet to a point; thence
9. South 32 degrees 32 minutes 21 seconds East, a distance of 37.90 feet to a point; thence
10. South 75 degrees 36 minutes 34 seconds East, a distance of 53.92 feet to a point; thence
11. South 02 degrees 11 minutes 55 seconds West, a distance of 31.64 feet to a point; thence
12. South 52 degrees 11 minutes 14 seconds West, a distance of 54.26 feet to a point; thence
13. South 78 degrees 38 minutes 41 seconds West, a distance of 28.57 feet to a point; thence

14. South 85 degrees 40 minutes 23 seconds West, a distance of 19.92 feet to a point; thence
15. North 42 degrees 36 minutes 55 seconds East, a distance of 52.04 feet to a point; thence
16. North 00 degrees 49 minutes 42 seconds East, a distance of 30.29 feet to a point; thence
17. South 88 degrees 21 minutes 33 seconds West, a distance of 61.07 feet to a point; thence
18. North 11 degrees 45 minutes 16 seconds West, a distance of 57.45 feet to a point; thence
19. North 82 degrees 59 minutes 54 seconds West, a distance of 21.69 feet to a point; thence
20. North 53 degrees 39 minutes 10 seconds West, a distance of 41.42 feet to a point; thence
21. North 25 degrees 09 minutes 41 seconds West, a distance of 33.09 feet to a point; thence
22. North 39 degrees 41 minutes 21 seconds West, a distance of 26.71 feet to a point; thence
23. North 66 degrees 52 minutes 55 seconds West, a distance of 25.38 feet to a point; thence
24. South 48 degrees 40 minutes 26 seconds West, a distance of 13.35 feet to a point; thence
25. South 31 degrees 52 minutes 27 seconds East, a distance of 45.88 feet to a point; thence
26. South 23 degrees 10 minutes 22 seconds East, a distance of 25.29 feet to a point; thence
27. South 35 degrees 16 minutes 22 seconds East, a distance of 35.88 feet to a point; thence
28. South 48 degrees 46 minutes 01 second West, a distance of 6.00 feet to a point; thence
29. North 41 degrees 13 minutes 59 seconds West, a distance of 38.60 feet to a point; thence
30. North 29 degrees 58 minutes 51 seconds West, a distance of 24.28 feet to a point; thence
31. North 48 degrees 47 minutes 08 seconds West, a distance of 35.63 feet to a point; thence
32. North 38 degrees 57 minutes 56 seconds West, a distance of 55.01 feet to a point; thence
33. South 83 degrees 16 minutes 00 seconds West, a distance of 95.40 feet to a point; thence
34. North 37 degrees 29 minutes 33 seconds West, a distance of 81.19 feet to a point; thence
35. North 00 degrees 16 minutes 22 seconds West, a distance of 26.05 feet to a point; thence
36. South 48 degrees 29 minutes 56 seconds West, a distance of 36.83 feet to a point; thence

37. North 44 degrees 30 minutes 42 seconds West, a distance of 3.56 feet to a point; thence
38. North 36 degrees 49 minutes 04 seconds East, a distance of 28.71 feet to a point; thence
39. North 00 degrees 03 minutes 21 seconds East, a distance of 38.74 feet to a point; thence
40. North 69 degrees 34 minutes 45 seconds West, a distance of 38.39 feet to a point; thence
41. North 55 degrees 21 minutes 22 seconds East, a distance of 34.00 feet to a point; thence
42. North 31 degrees 58 minutes 39 seconds West, a distance of 2.20 feet to a point; thence
43. North 64 degrees 46 minutes 57 seconds East, a distance of 20.18 feet to a point; thence
44. South 44 degrees 34 minutes 44 seconds East, a distance of 39.94 feet to a point; thence
45. South 50 degrees 30 minutes 31 seconds East, a distance of 31.50 feet to a point; thence
46. North 87 degrees 57 minutes 47 seconds East, a distance of 14.32 feet to a point; thence
47. North 26 degrees 31 minutes 04 seconds East, a distance of 33.51 feet to a point; thence
48. North 55 degrees 39 minutes 32 seconds East, a distance of 16.40 feet to a point; thence
49. South 87 degrees 04 minutes 48 seconds East, a distance of 25.55 feet to a point; thence
50. South 73 degrees 28 minutes 32 seconds East, a distance of 61.34 feet to a point; thence
51. South 38 degrees 27 minutes 46 seconds East, a distance of 25.01 feet to a point; thence
52. South 56 degrees 31 minutes 02 seconds East, a distance of 39.76 feet to a point; thence
53. South 76 degrees 19 minutes 54 seconds East, a distance of 32.24 feet to a point; thence
54. North 76 degrees 49 minutes 10 seconds East, a distance of 53.90 feet to the point or place of BEGINNING.

The above-described wetlands area contains 52,206 square feet (1.20 acres), more or less, as shown on a map entitled "Airport Corporate Park – Wetlands Exhibit" prepared by Menlo Engineering Associates, Inc.; job. no. 2009.079; drawing no. WEX-1; dated January 6, 2020.

The above-described wetland line is delineated from flags WC-2 through WC-42 and is classified as intermediate and is subject to a 50-foot wide wetlands buffer. This determination is based on the Freshwater Wetlands Letter of Interpretation: Line Verification DLUR FILE # 1100-07-0003.3, Activity Number FWW180001, Date of Issue: December 17, 2019; Date of Expiration: December 16, 2024.

The State of New Jersey has determined that all or a portion of this lot lies in a freshwater wetland and/or transition area. Certain activities in wetlands and transition areas are regulated by the New Jersey Department of Environmental Protection and some activities may be prohibited on this site or may first require a Freshwater Wetland Permit. Contact the Division of Land Use Regulation at (609) 292-0060 or <http://www.nj.gov/dep/landuse> for more information prior to any construction on site.

DP/kmr
MEA #2009.079
January 6, 2020



Gregg A. Gaffney
Professional Land Surveyor
NJPLS #GS43304



Line #	Length	Direction
L200	3.94	S30° 57' 09.90"W
L201	41.13	S76° 07' 22.85"W
L202	57.82	S85° 27' 19.83"W
L203	36.70	S33° 06' 20.84"W
L204	54.90	S39° 06' 20.84"W
L205	35.42	S45° 26' 22.84"W
L206	31.26	S51° 31' 18.10"W
L207	74.39	S57° 30' 25.40"W
L208	82.31	S64° 15' 33.86"W
L209	84.71	S71° 06' 33.81"W
L210	86.63	S77° 50' 21.74"W
L211	86.56	S77° 34' 44.84"W
L212	86.88	S83° 07' 57.20"W
L213	78.41	S87° 30' 44.66"W
L214	32.77	S41° 30' 22.97"W

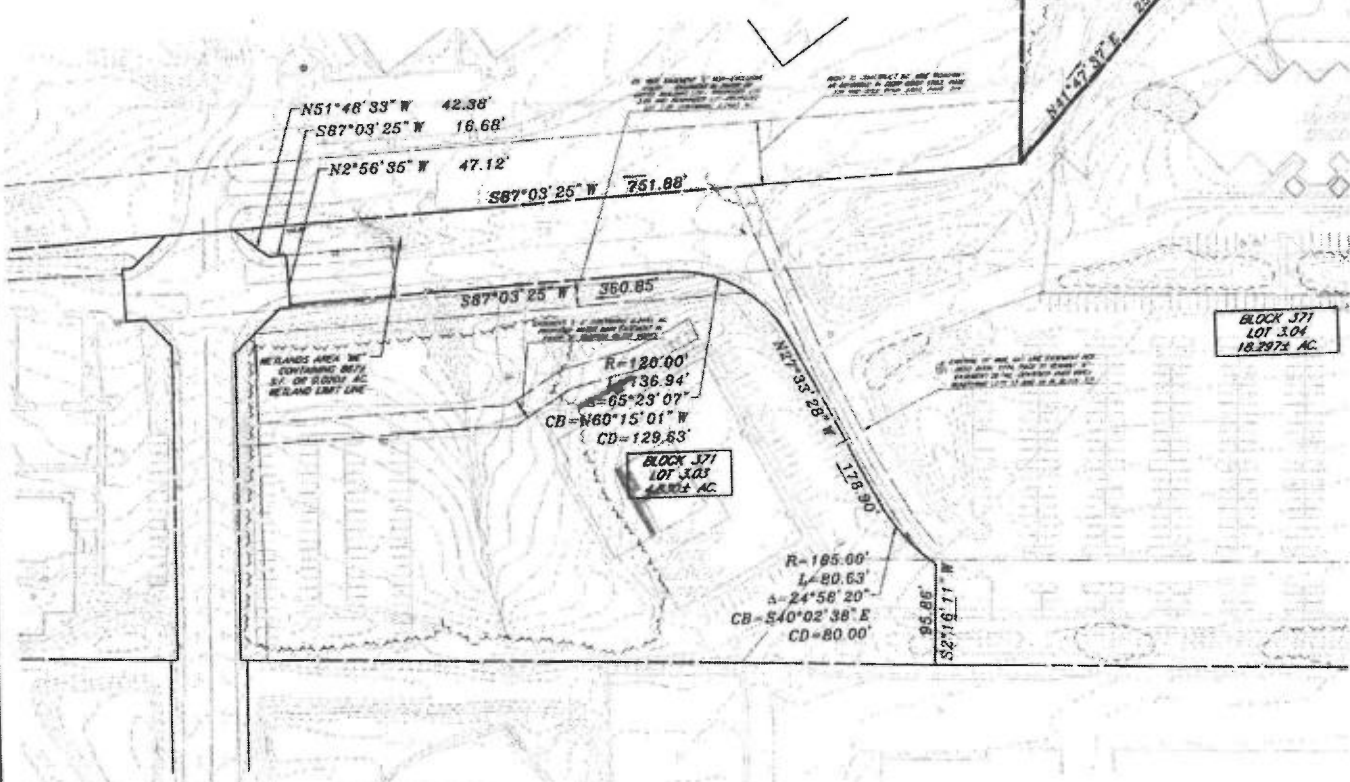
Line #	Length	Direction
L215	73.82	S35° 34' 10.80"W
L216	46.88	S0° 30' 53.26"E
L217	58.14	S20° 20' 31.38"E
L218	18.06	S80° 47' 32.84"W
L219	32.89	N37° 18' 43.31"W
L220	26.14	N60° 57' 58.28"W
L221	86.63	N89° 06' 43.33"W
L222	74.35	N61° 29' 35.44"W
L223	64.73	N80° 27' 38.17"W
L224	53.04	N68° 19' 48.85"W
L225	43.11	N46° 00' 33.87"W
L226	46.23	N62° 33' 16.02"W
L227	83.73	N8° 10' 04.02"W
L228	83.83	N83° 07' 06.41"W
L229	54.04	N62° 24' 57.53"W

Line #	Length	Direction
L230	15.79	S82° 23' 47.02"W
L231	30.71	S19° 27' 32.02"W
L232	40.51	S6° 31' 43.34"E
L233	10.84	S76° 53' 03.12"W
L234	41.77	S7° 22' 48.27"W
L235	61.12	N50° 57' 20.81"W
L236	24.10	N28° 46' 30.86"W
L237	39.53	S81° 44' 15.42"W
L238	52.54	S84° 03' 42.22"W
L239	52.94	N88° 02' 28.92"W

Line #	Length	Direction
L300	36.94	S44° 34' 43.81"E
L301	21.50	S69° 30' 31.18"E
L302	14.32	N87° 37' 46.67"E
L303	33.51	N25° 31' 04.28"E
L304	19.40	N50° 30' 32.09"E
L305	29.65	S87° 04' 48.12"E
L306	47.34	S73° 28' 21.00"E
L307	26.01	S38° 27' 45.89"E
L308	38.78	S29° 37' 01.81"E
L309	32.28	S76° 19' 54.30"E
L310	53.80	N70° 46' 08.77"E
L311	29.31	S6° 37' 02.10"W
L312	45.20	S43° 47' 52.50"W
L313	46.58	S23° 57' 05.46"W
L314	32.46	S0° 45' 11.02"E
L315	33.89	S48° 48' 16.08"E
L316	32.86	N87° 33' 36.19"E
L317	31.31	S48° 43' 49.07"E

Line #	Length	Direction
L318	22.57	S11° 22' 58.44"E
L319	37.80	S32° 22' 20.80"E
L320	52.82	S75° 30' 34.85"E
L321	31.84	S2° 11' 54.88"W
L322	64.28	S42° 11' 13.78"W
L323	28.57	S78° 30' 41.15"W
L324	19.82	S89° 40' 23.47"W
L325	52.04	N42° 30' 04.78"E
L326	39.29	N0° 48' 41.91"E
L327	91.07	S80° 21' 32.80"W
L328	51.43	N11° 45' 15.98"W
L329	21.89	N85° 50' 24.02"W
L330	41.42	N53° 30' 08.00"W
L331	33.09	N25° 09' 41.23"W
L332	26.71	N30° 41' 21.43"W
L333	35.38	N68° 02' 50.04"W
L334	13.20	S40° 40' 20.38"W
L335	45.88	S31° 57' 28.80"E

Line #	Length	Direction
L336	26.28	S23° 16' 22.14"E
L337	25.88	S50° 18' 22.97"E
L338	6.00	S48° 48' 01.37"W
L339	28.49	N41° 12' 58.03"W
L340	34.38	N09° 58' 31.96"W
L341	35.83	N48° 47' 08.38"W
L342	59.01	N38° 57' 30.70"W
L343	95.40	S83° 38' 00.18"W
L344	61.10	N37° 20' 11.98"W
L345	26.09	N0° 16' 21.28"W
L346	26.83	S49° 29' 55.81"W
L347	3.56	N44° 30' 41.37"W
L348	28.71	N38° 48' 04.57"E
L349	36.74	N0° 43' 20.37"E
L350	38.56	N69° 30' 48.10"W
L351	34.00	N03° 31' 22.18"E
L352	2.39	S21° 08' 28.50"W
L353	20.16	N84° 48' 56.81"E



REFERENCES:

1. PLAN ENTITLED "ALTA/ACSM LAND TITLE SURVEY WACHOVA BANK BLOCK 371, LOT 3.02, EWING TOWNSHIP, BLOOMING TWP, MERCER COUNTY, NEW JERSEY" PREPARED BY TAYLOR WEISMAN & TAYLOR; DRAWING NO. 026-01526 6000-17, DATED SEPTEMBER 29, 2005.
2. PLAN ENTITLED "AMENDED PLAN OF MAJOR SUBDIVISION FOR BLOCK 371, TAX LOT 3.02 SITUATE IN EWING TOWNSHIP, MERCER COUNTY, NEW JERSEY" PREPARED BY VAN CLEEF ENGINEERING ASSOCIATES; JOB NO. 08-06-EMG, DATED AUGUST 1, 2008 REVISED THROUGH JULY 23, 2009.
3. PLAN ENTITLED "PLAN OF SUBDIVISION BLOCK 371 LOT 3, EWING TOWNSHIP, MERCER COUNTY, NEW JERSEY" PREPARED BY TAYLOR, WEISMAN & TAYLOR; JOB NO. 322-19894-001-2, DATED NOVEMBER 14, 2000.
4. TOWNSHIP OF EWING TAX MAP SHEET #65
5. NJDEP FRESHWATER PERMIT, PERMIT #1100-07-0003.2 FWA 120002 DATED JUNE 27, 2012
6. NJDEP FWA INDIVIDUAL PERMIT, PERMIT #1100-07-0003.2 FWA 120002 DATED JUNE 27, 2012
7. NJDEP FRESHWATER WETLANDS GENERAL PERMIT NO. 2, PERMIT #1100-07-0003.2 FWA 120004 DATED JUNE 27, 2012
8. NJDEP FRESHWATER WETLANDS GENERAL PERMIT NO. 19A, PERMIT #1100-07-0003.2 FWA 120003 DATED JUNE 27, 2012
9. NJDEP FRESHWATER WETLANDS TRANS. ARCA WAREHOUSE NO. 10A, PERMIT #1100-07-0003.2 FWA 120003 DATED JUNE 27, 2012
10. GOOGLE MAPS AERIAL PHOTOGRAPHIC READER DATED 2019 FOR CURRENT TREE LIMITS.
11. ADDITIONAL DATA POINTS SUPPLIED BY Dennis W. Sidor, PLS, Dennis R. Sidor, Inc. 3020 Glenn Avenue, Bensalem, PA 19020

KEY OF SYMBOLS



GRAPH



BLOCK 371
LOT 3.04
18.7974 AC.

BLOCK 371
LOT 3.03
4.8165 AC.

R=195.00'
L=80.63'
A=24°56'20"
CB=510°02'38"E
CD=80.00'

CB=160°15'01"W
CD=129.83'

R=120.00'
L=136.94'
A=65°23'07"

N51°48'33"W 42.36'
S87°03'25"W 16.68'
N2°56'36"W 47.12'

S87°03'25"W 751.88'

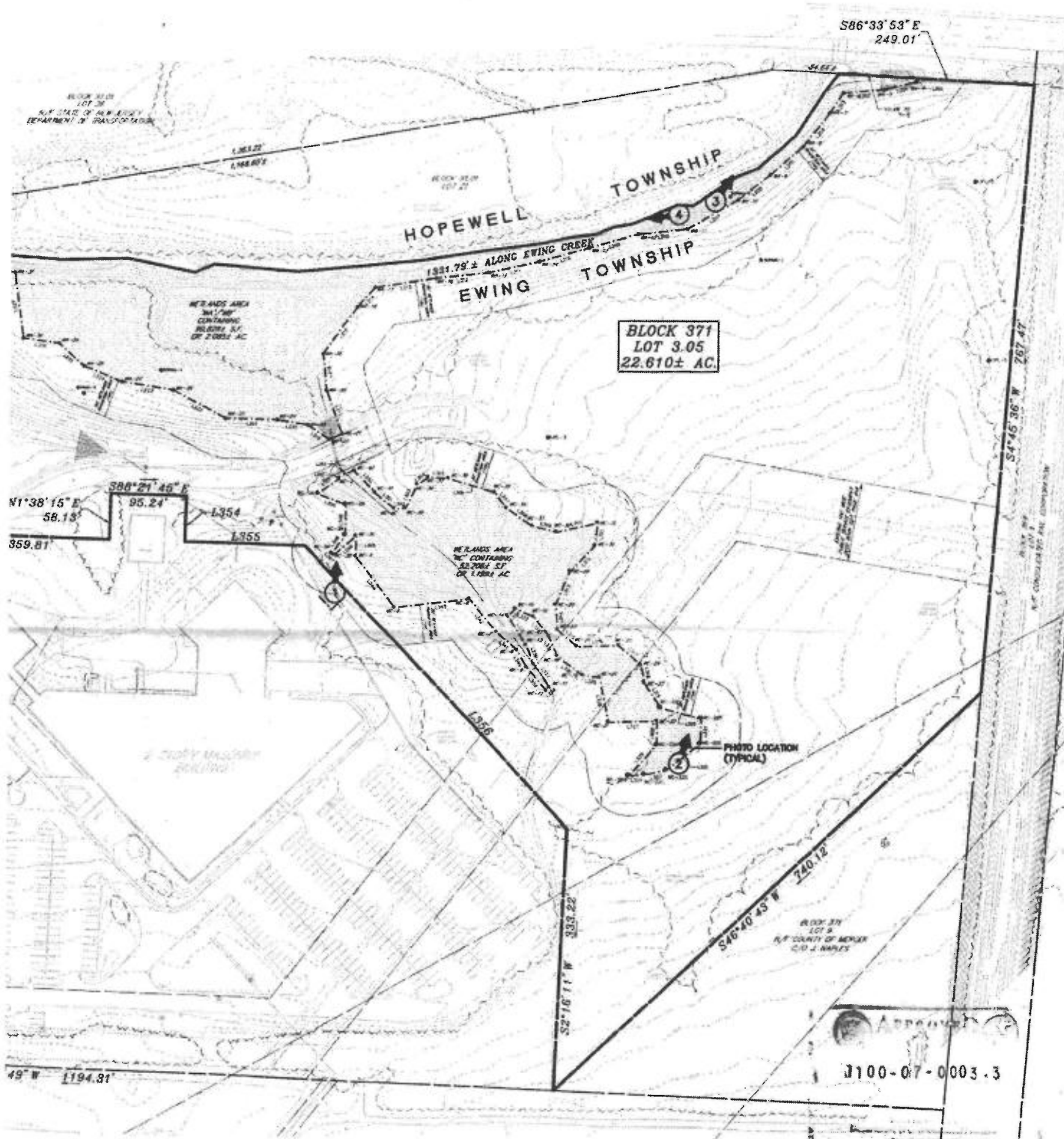
S87°03'25"W 350.85'

N17°35'28"W 128.90'

S2°20'43"W 550.00'

N11°57'37"E 251.21'

S80°34'16"W
194.62'



**BLOCK 371
LOT 3.05
22.610± AC.**

Approved
J100-07-0003.3

THIS DRAWING IS FOR PERMIT PURPOSES ONLY - NOT FOR CONSTRUCTION UNLESS THIS BOX HAS BEEN CHECKED AND DATED.

DATE	BY	REVISION

THIS DRAWING PREPARED UNDER MY PREVIOUS SUPERVISION.

DRAWN BY: *[Signature]*
 CHECKED BY: *[Signature]*
 DATE: *[Date]*

DREG A. GAFFNEY
 PROFESSIONAL LAND SURVEYOR N.J. 004384

MENLO ENGINEERING ASSOCIATES, INC.
 CIVIL ENGINEERS, LAND SURVEYORS AND PROFESSIONAL PLANNERS
 281 CLEVELAND AVENUE HIGHLAND PARK, NEW JERSEY 08904
 PHONE: (732) 846-8585 FAX: (732) 846-9439
 CERTIFICATE OF AUTHORIZATION: 24627851900

AIRPORT CORPORATE PARK
 TOWNSHIP OF EWING, MERCER COUNTY, NEW JERSEY

WETLANDS DELINEATION PLAN
 BLOCK 371 LOTS 3.05 TAX MAP SHEET: 85 22.610 ACRES±

DRAWN BY: ME
 DESIGNED BY: WAL
 CHECKED BY: WAL
 APPROVED BY: WAL

DATE OF ISSUE:
 NOVEMBER 13, 2018
 REV 1) AUGUST 29, 2019

SCALE: 1"=80'
 JOB # 2008.079
 DWG # WD-1
 SHEET # 1 OF 1

APPROVED